

PALMS **FORESTRY** **TRAILERS** **AND** **CRANES**



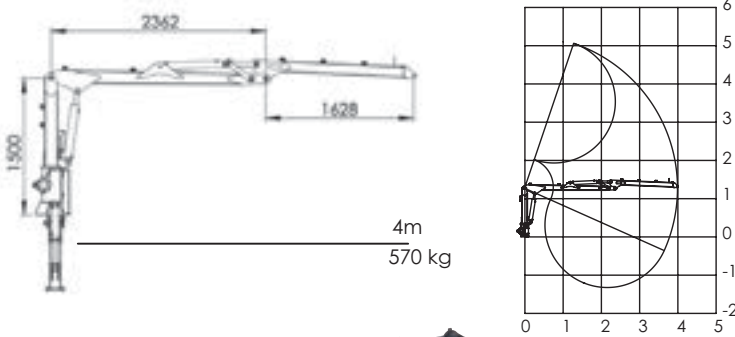
T: +44 (0)28 9034 2838
E: sales@mlarge.com
www.mlarge.com



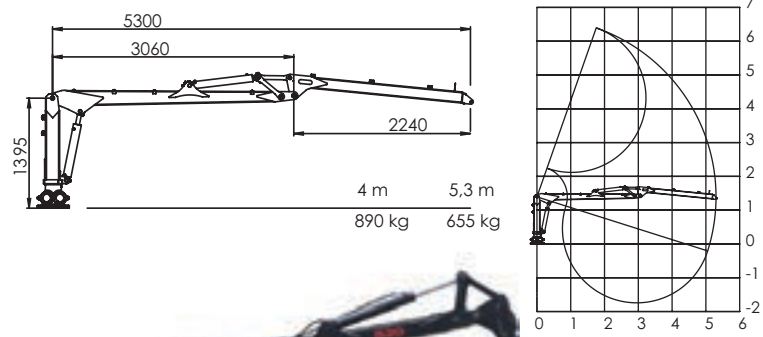
PALMS

Quality has never been so affordable

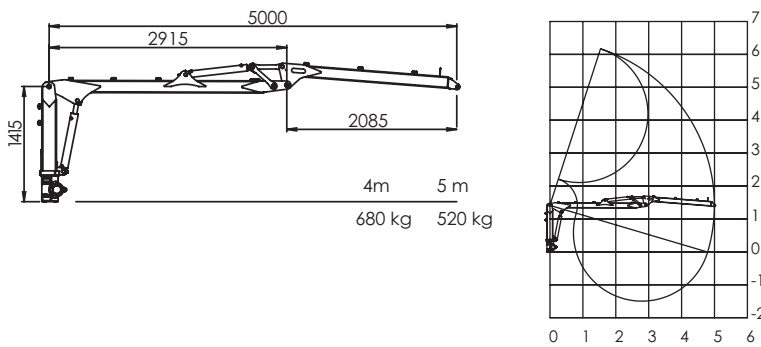
Palms 400



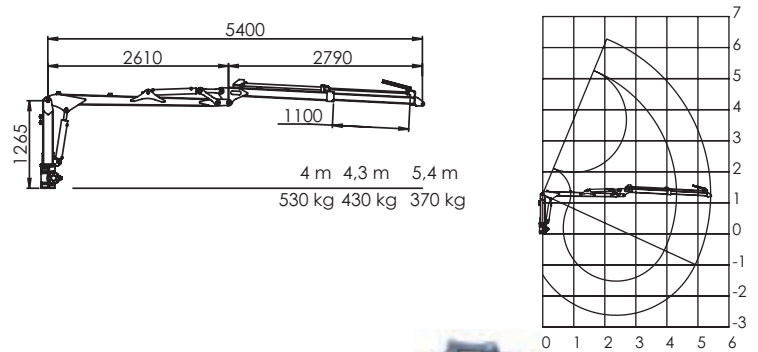
Palms 530



Palms 500



Palms 540



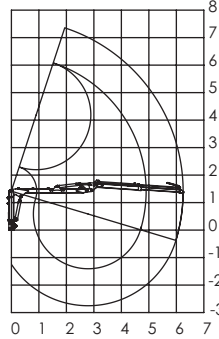
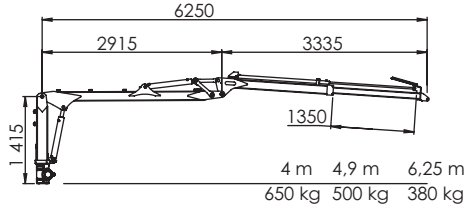
T: +44 (0)28 9034 2838

E: sales@mlarge.com

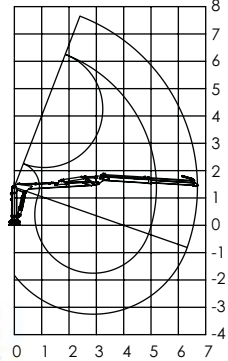
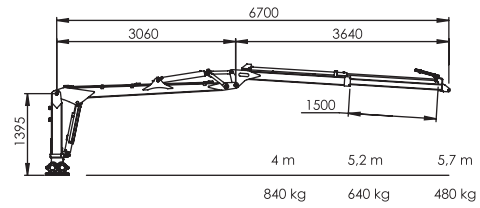
W: www.mlarge.com



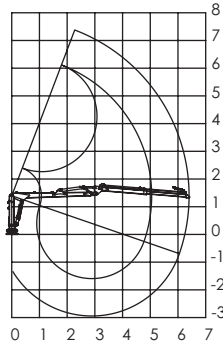
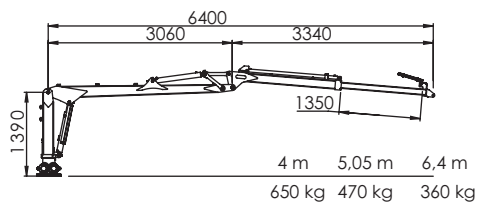
Palms 625



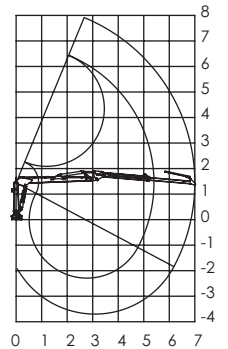
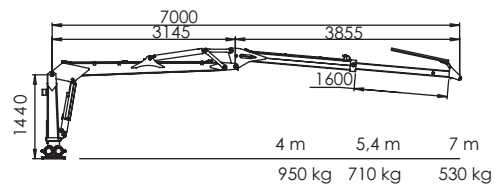
Palms 670



Palms 640



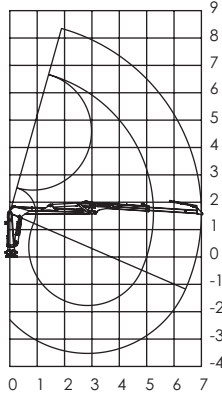
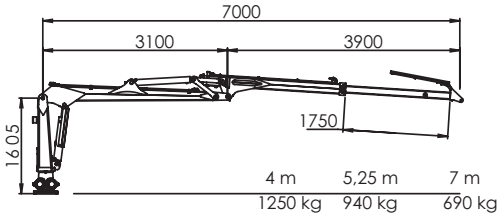
695



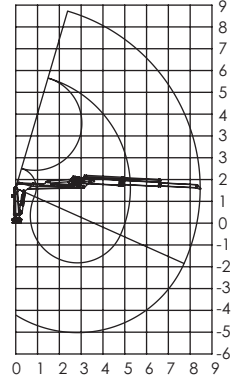
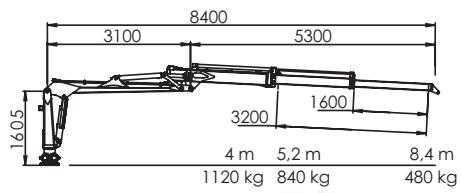
PALMS

Quality has never been so affordable

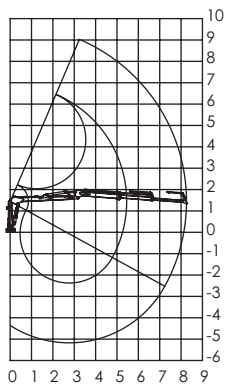
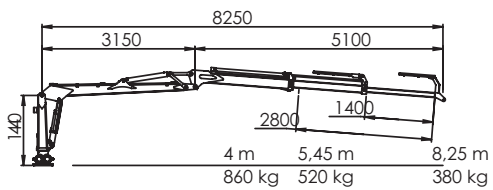
Palms 700



Palms 840



825



Crane Model	PALMS 400	PALMS 500	PALMS 530	PALMS 540	PALMS 625	PALMS 640	PALMS 670	PALMS 695	PALMS 700	PALMS 825	PALMS 840
Max Outreach, m	4	5	5,3	5,4	6,25	6,4	6,7	7	7	8,25	8,4
Lifting Moment, gross kNm	25	33	42	25	33	33	42	48	62	48	62
Lifting capacity at 4 m (no grapple and rotator, kg)	570	680	890	530	650	650	840	950	1250	860	1120
Slewing torque, kNm	4,2	5,5	11,5	5,8	7,2	11,5	11,5	14,5	18	14,5	18
Slewing angle, °	370	370	370	370	370	370	370	370	370	370	370
Slewing cylinders, (number)	2	2	4	2	2	4	4	4	4	4	4
Crane's weight without support legs and valve block, kg	360	490	565	400	540	610	625	755	1020	840	1130
Type of rotator	GR30	GR30	GR30	GR30	GR30	GR46	GR30	GR46	GR46	GR46	GR46
Lifting capacity at full reach, kg (no grapple and rotator)	570	520	655	370	380	360	480	530	690	380	480
FD type (flap down) outriggers weight, kg	190	190	260	190	-	260	390	390	390	390	390
A type (telescopic) outriggers weight, kg	240	240	300	240	240	300	300	300	300	300	300
Weight of standard grapple and rotator, kg	79	79	79	95	79	79	79	115	115	139	139

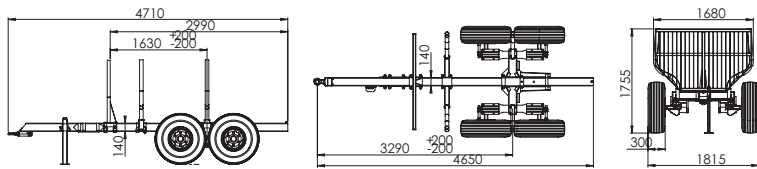


PALMS

Quality has never been so affordable

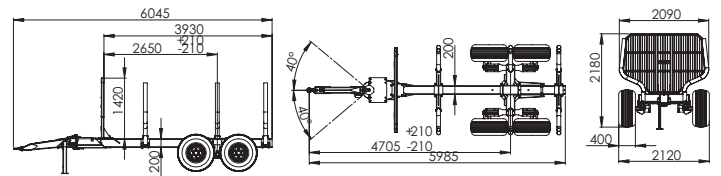
Palms 6s

Suitable for following cranes 400



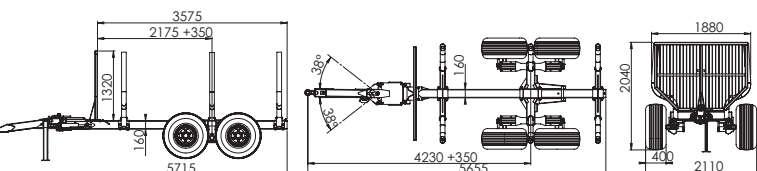
Palms 9s

Suitable for following cranes 530 | 540 | 625 | 640 | 670 | 695 | 825



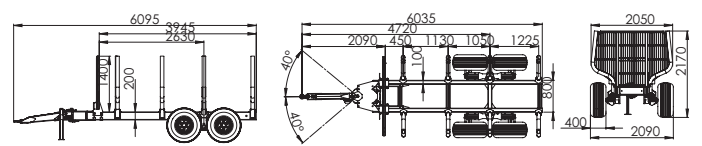
Palms 8s

Suitable for following cranes 500 | 530 | 540 | 625 | 640 | 670

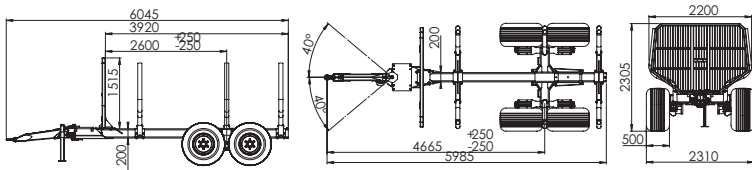


Palms 10D

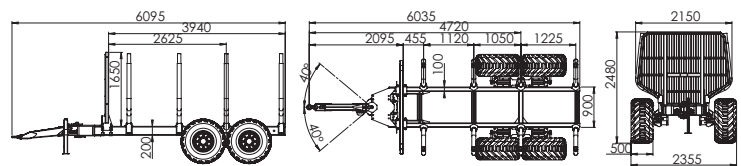
Suitable for following cranes 530 | 540 | 625 | 640 | 670 | 695 | 700



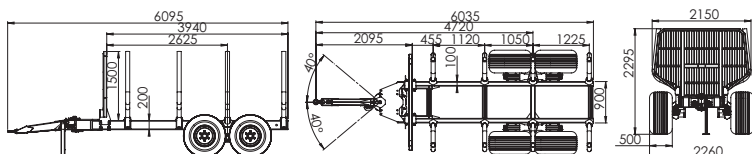
Palms 11s Suitable for following cranes 530 | 540 | 625 | 640 | 670 | 695 | 825 | 700 | 840



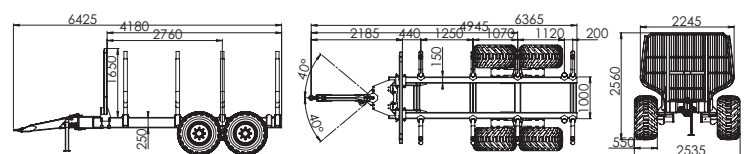
Palms 13D Suitable for following cranes 530 | 540 | 625 | 640 | 670 | 695 | 825 | 700 | 840



Palms 12D Suitable for following cranes PALMS 530 | 540 | 625 | 640 | 670 | 695 | 825 | 700 | 840



Palms 15D Suitable for following cranes 530 | 540 | 625 | 640 | 670 | 695 | 825 | 700 | 840



TRAILERS	PALMS 6S	PALMS 8S	PALMS 9S	PALMS 10D	PALMS 11S	PALMS 12D	PALMS 13D	PALMS 15D
Load capacity up to 40 km/h,(kg)	6000	8000	9500	10 000	11 000	12 000	13 000	15 000
Axles frame & gauge (mm)	60x60-6	60x60-6	70x70-6	70x70-6	70x70-6	70x70-6	80x80-8	80x80-8
Chassis frame & gauge (mm)	140x140x6	160x160x8	200x200x6	2x200x100x6	200x200x10	2x200x100x8	2x200x100x8	2x(250x150x8)
overall length, mm	4710	5715	6045	6095	6045	6095	6095	6425
Drawbar Steering Cylinder	0 (fixed)	2	2	2	2	2	2	2
Maximum torque of installed crane (kNm)	26	42	50	50	62	62	62	62
Cross section of loading area, m ²	1,5	1,9	2,1	2,2	2,4	2,5	2,7	3
Width with standard wheels, mm	1815	2110	2120	2090	2310	2260	2355	2535
Length of loading area, mm	2990	3575	3930	3945	3920	3940	3940	4180
Standard wheels	11,5/80-15,3	11,5/80-15,3	400/60-15,5	400/60-15,5	400/60-15,5	400/60-15,5	500/50-17	500/50-17
Turning Angle of Drawbar °	-fixed	± 38	± 40	± 40	± 40	± 40	± 40	± 40
Optional extension for loading area	-	+	+	+	+	+	+	+
2 WD (inner drum drive) option		+	+	+	+	+	+	+
4 WD (roller drive between wheels) option				+	+	+	+	+



T: +44 (0)28 9034 2838
E: sales@mlarge.com
W: www.mlarge.com



PALMS

Quality has never been so affordable

Rigid turning house made of casted iron guarantees great durability of crane's slewing mechanism. Wearproof double-row roller bearing and large diameter turning shaft.



Placement of hydraulic hoses is well designed and hidden in order to avoid accidental damages.



Big diameter junction shafts are hardened and polished - it guarantees long life for bronze bearings.



Length of loading area is extendable.



Durable 90 mm diameter support posts

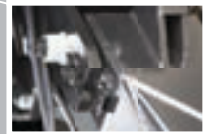


Foldable back lights

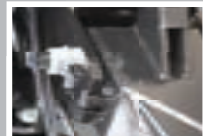


Well dimensioned hydraulic valve blocks with sufficient oil throughput capacity. Pilot operated and full electric valve blocks and load sensing pumps ensure quick and smooth operations without excessive energy usage. For professional users we recommend efficient and ergonomic LS, load sensing, version (saves up to 30% of fuel).

Palms 840 grab's hoses are placed inside the telescopic beam, such well protected design protects against accidental damages caused by branches.



Smart drawbar locking mechanism



Long distance between drawbar mounting ears reduces load impact to drawbar and axle bearings.



Hydraulically operated (+/- 40 degrees) drawbar ensures good maneuvering capability in narrow space. Two hydraulic drawbar cylinders with long working length ensure necessary power and smooth operations. (Palms 81 - one drawbar cylinder, Palms 92-142 - two drawbar cylinders.)



Flap down support leg cylinder is protected with steel plate from loading side and is opened from tractor's side - this avoids collecting of debris on to leg.



Bolder front beams of trailer's chassis make possible to mount on trailer cranes with bigger loading capacity, without making it significantly heavier.



Eight bolts fastened wheels (on trailers 122-142).

HYDRAULIC VALVE CONTROLS, GRAPPLES, ACCESSORIES



A2 - 5/7 XY



A4 - 4/8 XY 2 x el. on-off



A5 - 2/8 XY 4 x el. on-off



A7 - 4/8 XYZ



A12 - 2/8
Pre hydraulic (pilot operated)



A20 - IQAN propo



A25 - IQAN propo with mini joysticks



A26 - Scanreco Radio controlled

		PALMS 400	PALMS 500	PALMS 530	PALMS 540	PALMS 625	PALMS 640	PALMS 670	PALMS 695	PALMS 810	PALMS 700	PALMS 840
5/7 XY	A2	+	+	+	-	-	-	-	-	-	-	-
6/8 XY control valve	A3	-	-	-	+	+	+	+	+	+	-	-
4/8 XY 2 x el. on-off	A4	-	-	-	+	+	+	+	+	+	-	-
2/8 XY 4 x el. on-off	A5	-	-	-	+	+	+	+	+	+	-	-
4/8 XYZ	A7	-	-	-	+	+	+	+	+	+	+	+
2/8 Pre hydraulic Parker 70	A11	-	-	-	-	-	+	+	+	+	-	-
2/8 pilot operated	A12	-	-	-	-	-	+	+	+	+	+	+
IQAN proportional	A20	-	-	-	-	-	+	+	+	+	+	+
IQAN proportional with display	A25	-	-	-	-	-	-	-	+	+	+	+
Scanreco radio controlled	A26	-	-	-	-	-	+	+	+	+	+	+

+ Recommended combination



C8 - 0,12 / 920 mm / GR30 rotator / mounted with bolt / material 355 steel



C1 - 0,17 / 1090 mm / GR30 rotator / mounted with bolt / material 355 steel



C2 - 0,21 / 1220 mm / GR30 rotator / mounted with bolt / material RAEX 400



C3 - 0,21 / 1220 mm / GR46 rotator / mounted with bolt / material RAEX 400



C4 - 0,215 PRO / 1310 mm / GR46 rotator / mounted with bolt / material HARDOX



C5 - 0,265 PRO, 1410 mm / GR463 rotator / mounted with flange / material HARDOX



C6 - 0,215 PRO / 1310 mm / GR46 rotator / mounted with bolt / material HARDOX



C7 - 0,265 PRO / 1410 mm / GR463 rotator / mounted with flange / material HARDOX



Filter - High pressure oil filter with indicator



Trac power - 2.5 x trac power device 45-100 L/min



Pressure and temperature indicator for full electric proportional valve block with display



2WD - Sampo Hydraulics Blackbruin 2 wheel drive with hydraulic motors



4WD - Farmiforest Vario 101 roll between tires operated four wheel drive

